



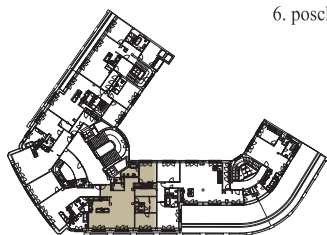
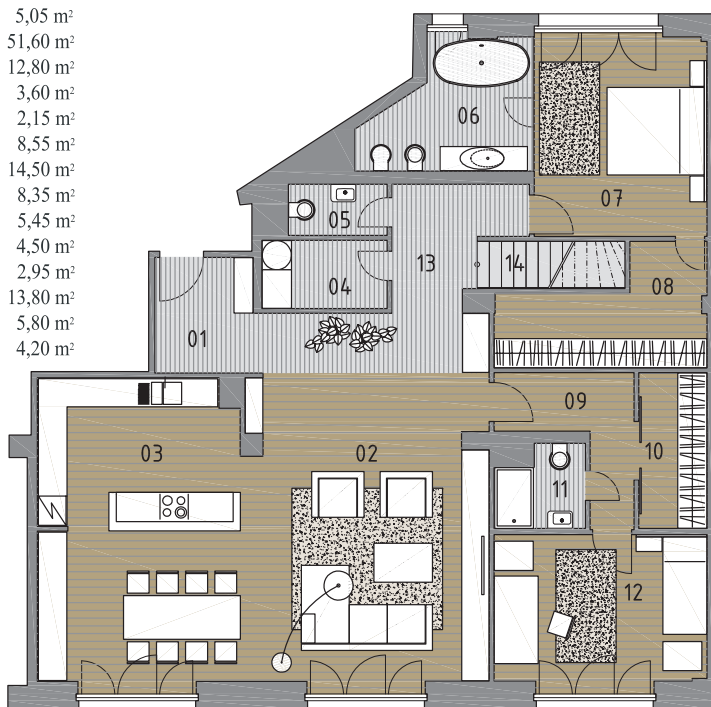
CITY GATE

4-IZBOVÝ BYT č.
4 ROOM, 2-STORY FLAT no.

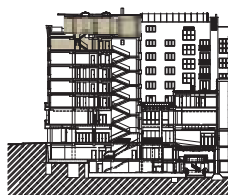
606

MEZONETOVÝ BYT Č. 606, 4-IZBOVÝ / 4 ROOM 2-STORY FLAT NO. 606
CELKOVÁ PLOCHA BYTU / FLAT AREA 185,3 m²,
TERASA / TERRACE 69,10 m²

606/01	PREDSIEŇ / HALLWAY	5,05 m ²
606/02	OBÝVACIA IZBA+JEDÁLEŇ / LIVIUNG ROOM+DINING ROOM	51,60 m ²
606/03	KUCHYŇA / KITCHEN	12,80 m ²
606/04	DOMÁCE PRÁCE / LAUNDRY	3,60 m ²
606/05	WC / LAVATORY	2,15 m ²
606/06	KÚPEĽŇA / BATHROOM	8,55 m ²
606/07	SPÁLŇA / BEDROOM	14,50 m ²
606/08	ŠATNÍK / WARDROBE	8,35 m ²
606/09	CHODBA / CORRIDOR	5,45 m ²
606/10	ŠATNÍK / WARDROBE	4,50 m ²
606/11	KÚPEĽŇA / BATHROOM	2,95 m ²
606/12	IZBA / ROOM	13,80 m ²
606/13	CHODBA / CORRIDOR	5,80 m ²
606/14	SCHODISKO / STAIRCASE	4,20 m ²



6. poschodie / 6th floor



6. poschodie / 6th floor



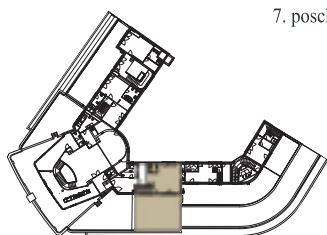
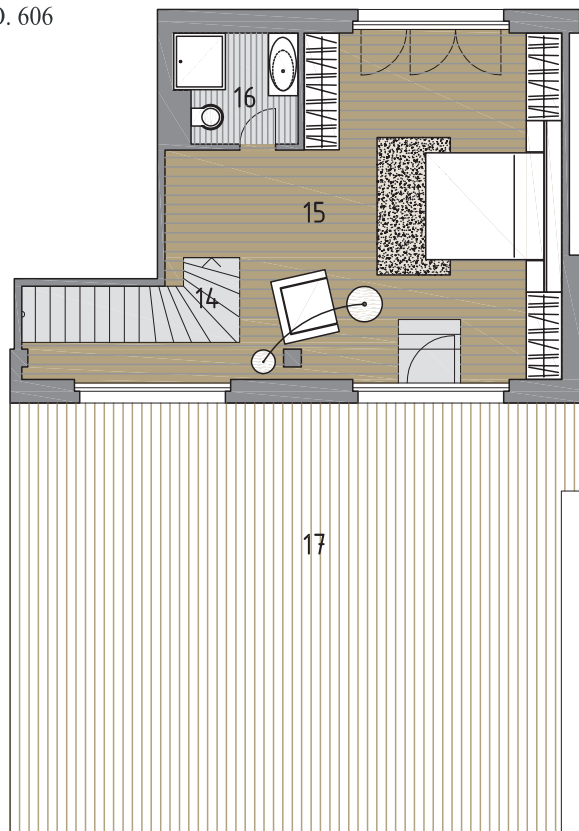
CITY GATE

4-IZBOVÝ BYT č.
4 ROOM , 2-STORY FLAT no.

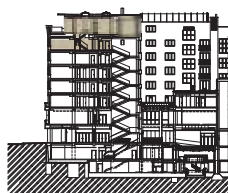
606

MEZONETOVÝ BYT Č. 606, 4-IZBOVÝ / 4 ROOM 2-STORY FLAT NO. 606
CELKOVÁ PLOCHA BYTU / FLAT AREA 185,3 m²,
TERASA / TERRACE 69,10 m²

706/14 VZDUŠNÝ PRIESTOR SCHODISKA / STAIRCASE AREA	
706/15 SPÁLŇA / BEDROOM	34,05 m ²
706/16 KÚPEĽŇA / BATHROOM	3,70 m ²
706/17 TERASA / TERRACE	69,10 m ²



7. poschodie / 7th floor



7. poschodie / 7th floor